

COMPANIONS' WEEKEND
Friday June 10th — Saturday June 11th 2016

This year marks the 80th anniversary of the gift by Margaret Knight of St George's Field, a wildflower meadow in the Gloucestershire village of Sheepscombe.

The visit will start on Friday, June 10th. It will include a short talk about the history of the field, a guided walk with Companion Professor David Ingram and Natural England's Kate Gamez. This will culminate in the unveiling of a new sign to commemorate 80 years of the field being in the Guild's care. Commissioned by the Guild, it has been made of Wyre oak by carpenter Mac Wassell, with lettering by Robert Cox. Companions are invited to a buffet dinner that evening at the Ruskin Studio at Unclyls Farm on Ruskin Land near Bewdley in the Wyre Forest.

On Saturday, June 11th we will take a tour of Beaucastle, the Gothic mansion built by the Guild's patron and second Master, George Baker. The day will also include a visit to St George's Farm, where Companions can see the newly-planted orchard of 150 trees, and hear an update on research and plans for forthcoming events on Ruskin Land from Companions Neil Sinden and Lynne Roberts.

As always we thank Director John Iles and his team for their hospitality.
(Car-parking is available at each location.)

PROGRAMME

Visit to Sheepscombe

Friday June 10th

12.15 Arrival. Park at the Ebworth Centre (National Trust)

<https://www.nationaltrust.org.uk/features/the-ebworth-centre>

The Ebworth Centre is located on the B4070 road between Birdlip and Stroud, and is signposted from this road near the Foston's Ash pub. The postcode is GL6 7ES.

12.30 Lunch at the Ebworth Centre (£7.50 pp).

This will be followed by a short presentation about the history of the Field.

13.30 ½ mile walk to St George's Field for a tour guided by Companion, plant scientist Professor David Ingram, author of *Gardens of Brantwood*, and Kate Gamez of Natural England.

15.00 Unveiling of the new sign to commemorate the 80th anniversary of the gift of the wildflower meadow to the Guild. Made of Wyre oak by Mac Wassell with lettering by Robert Cox.

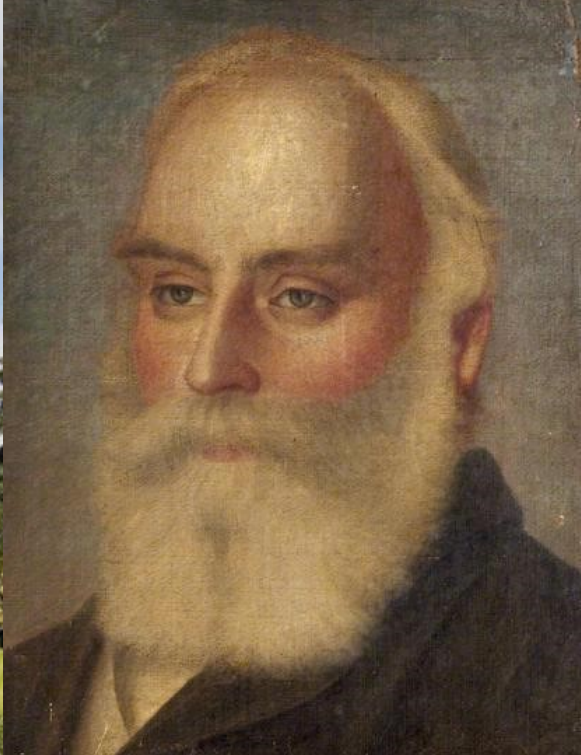
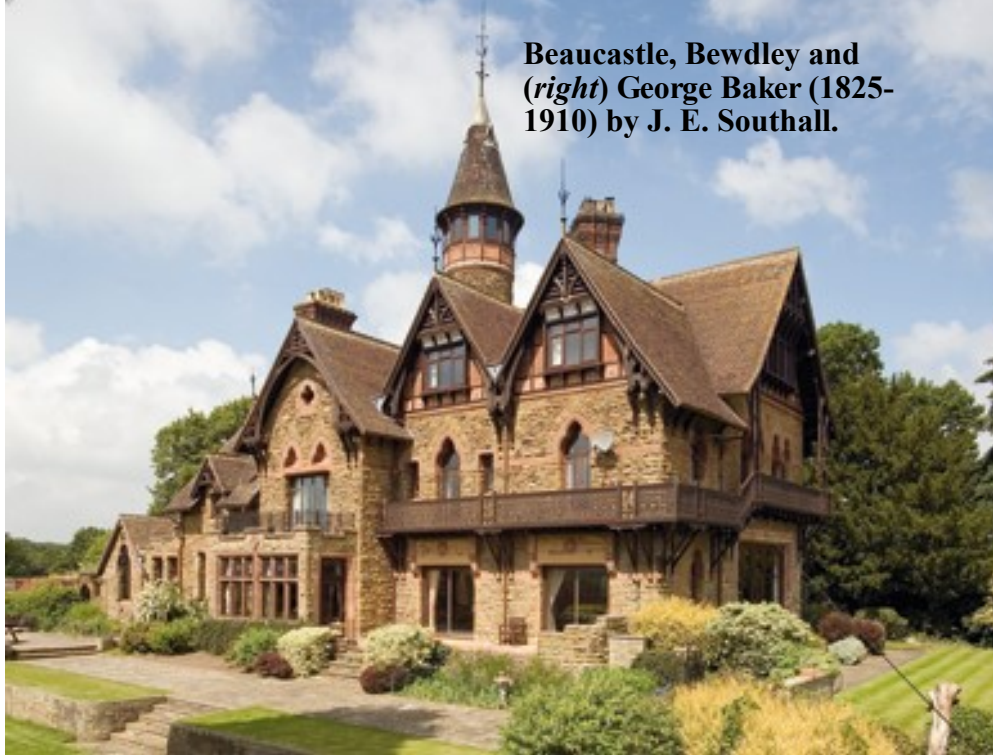


(Above, left) The original sign at St George's Field, Sheepscombe.

(Above, right) Miss Margaret E. Knight (1870-1949) donor of the wildflower meadow to the Guild in 1936.

(Background image) St George's Field, Sheepscombe.

Beaucastle, Bewdley and
(right) George Baker (1825-
1910) by J. E. Southall.



15.15 Return to the Ebworth Centre for tea & cake and closing remarks.

16.00 Departure.

1900 Buffet dinner in the Ruskin Studio, Unclyys Farm (£20pp)
(Unclyys Farm, Tanners Hill, Ruskin Land, Bewdley, Worcs, DY12 2LR.)

NB. Can anyone with mobility difficulties please let us know when booking so that we can arrange transport from the Ebworth Centre to St George's Field..

Visit to Bewdley

Saturday June 11th

10.45 Arrival at Beaucastle for coffee and welcome.

(Beaucastle, Longbank, Bewdley, Worcestershire, DY12 2QS.)

11.00 Beaucastle's owners, Dale and Alex Parmeter, will lead a guided tour of the property.

There will be an opportunity to see the carvings by sculptor and early Companion, Benjamin Creswick, and to learn more about George Baker who commissioned Beaucastle and donated land to the Guild in the Wyre Forest.

13.00 Lunch at the Ruskin Studio, Unclyys Farm (£7.50pp).

(Unclyys Farm, Tanners Hill, Ruskin Land, Bewdley, Worcs, DY12 2LR.)

14.00 Short walk to St George's Farm to see the property and progress on the planting of the new orchard of 150 trees. The visit will include updates from Companions Neil Sinden (on research into the early Wyre Companions) and Lynne Roberts (on the development of a Ruskin Land cultural programme)

15.30 Return to the Ruskin Studio for tea and cake, closing remarks and departure.

<http://www.guildofstgeorge.org.uk/companions-weekend/>



(Above) The Ruskin Studio at Unclyys Farm,
Ruskin Land.

(Left) St George's Farm, Ruskin Land.